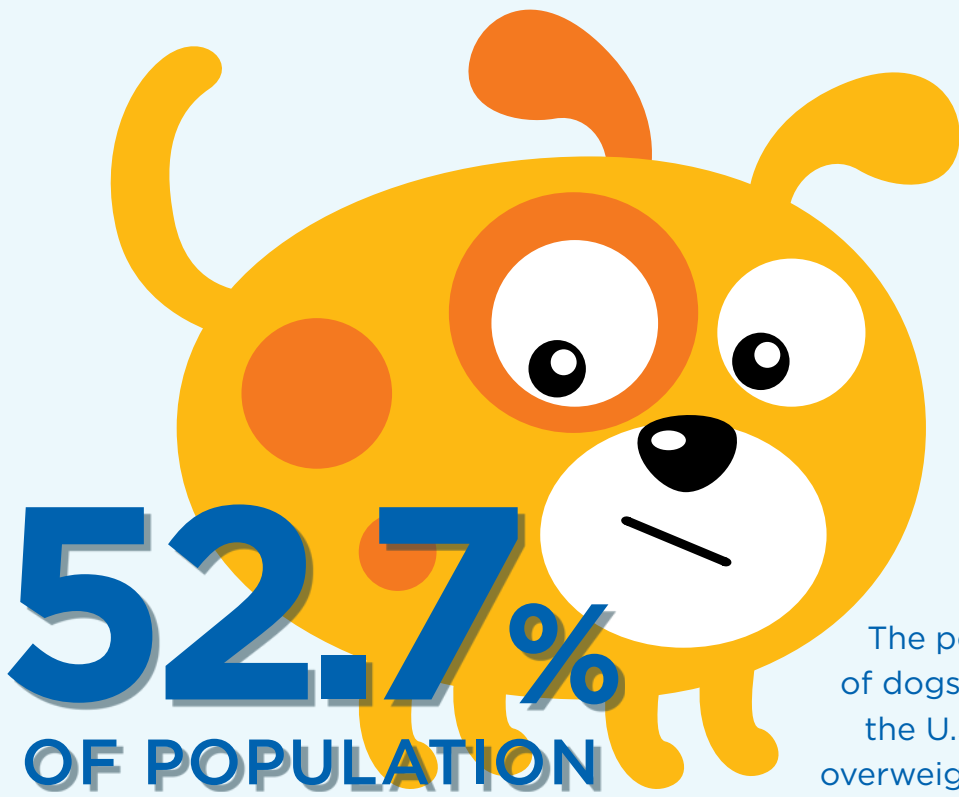


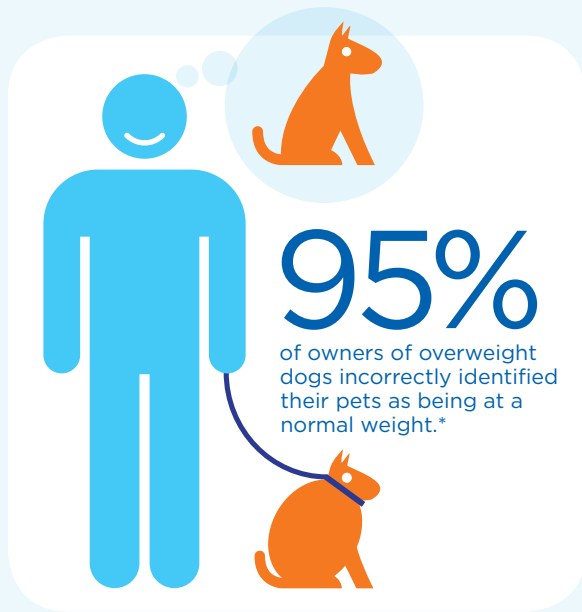
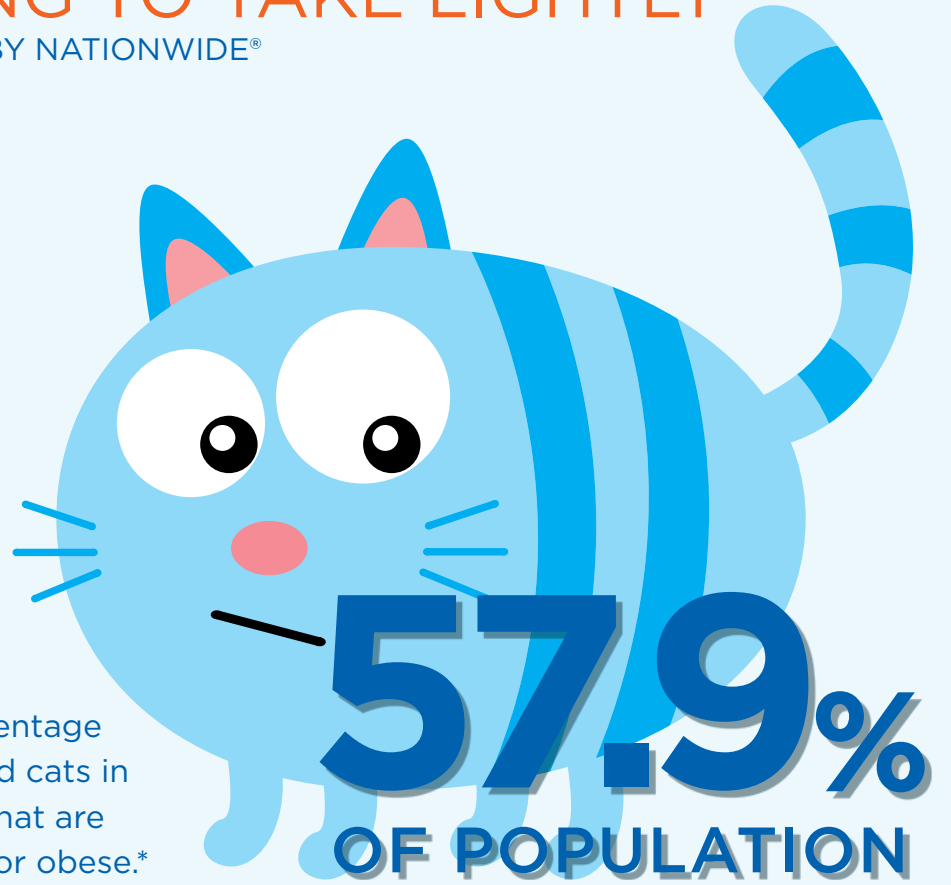
The SKINNY on PET OBESITY

FAT PETS ARE NOTHING TO TAKE LIGHTLY

BROUGHT TO YOU BY NATIONWIDE®



The percentage of dogs and cats in the U.S. that are overweight or obese.*



How many extra pounds does it take to put your pet at risk for developing serious medical conditions?*



Did you know?

Weight loss for our feline friends is more complicated than it is for dogs or people. **Never put your cat on a diet without veterinary supervision**—you could actually endanger his health.



Oink, oink

1 premium pig ear = 6 12oz colas*

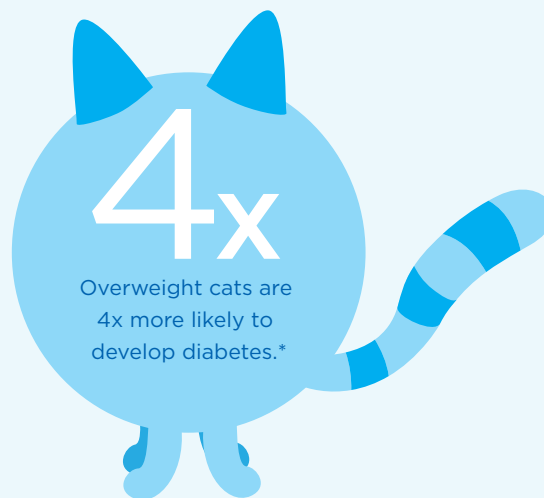


Transition your pet to a new diet over a one-week period.

Days 1-2:	Days 3-4:	Days 5-6:	Day 7:
1/4 new food, 3/4 old food	1/2 new food, 1/2 old food	3/4 new food, 1/4 old food	100% new food

Overweight pets are more prone to:

- Diabetes
- Arthritis
- Kidney disease
- ACL injury
- Shorter life



*Source: Association for Pet Obesity Prevention

Take control of your pet's health with Nationwide pet insurance. Get a quote today.
877-738-7874 • PetsNationwide.com